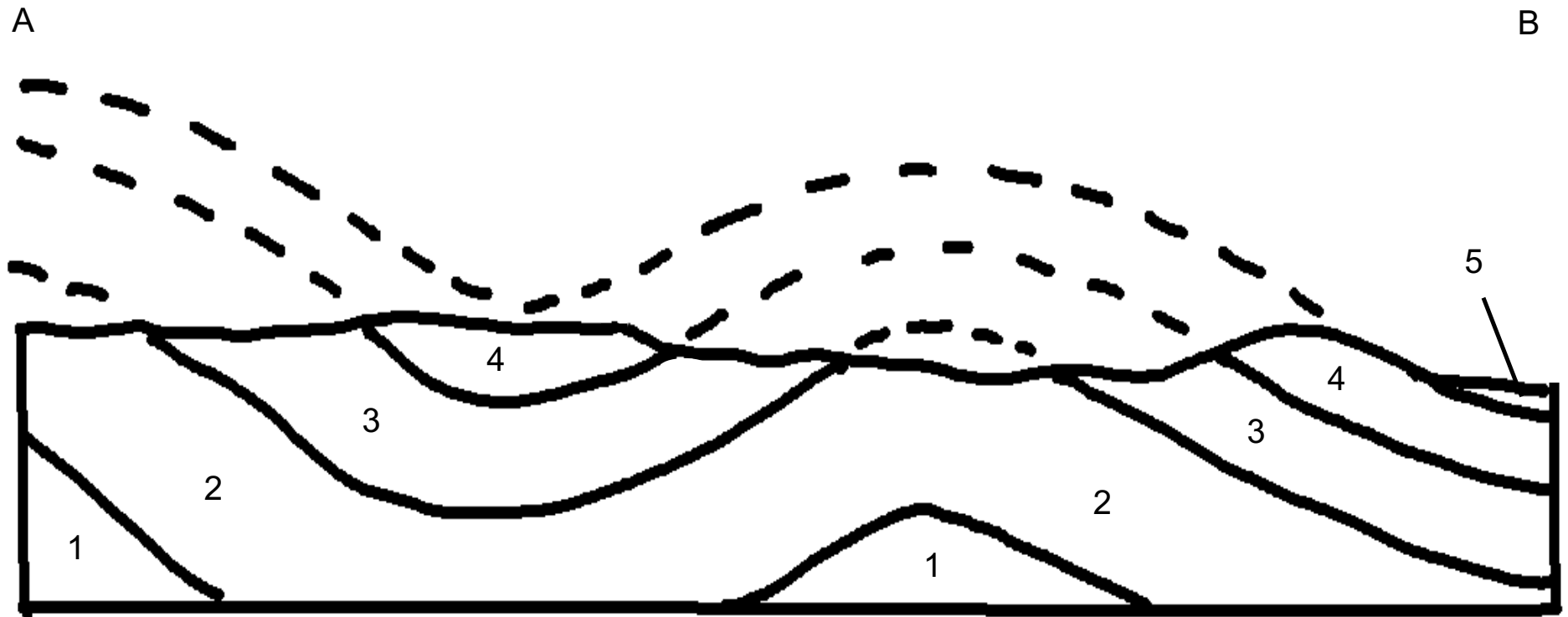
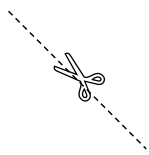
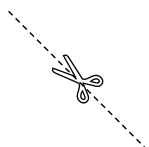


Plunging Folds – Cross-Section A-B, Projected





Handwriting practice lines consisting of two rows of dotted characters for tracing. The first row contains the letters 'A', 'B', 'C', 'D', 'E', 'F', 'G', 'H', 'I', 'J', 'K', 'L', 'M', 'N', 'O', 'P', 'Q', 'R', 'S', 'T', 'U', 'V', 'W', 'X', 'Y', 'Z'. The second row contains the numbers '1', '2', '3', '4', '5', '6', '7', '8', '9', '0'.

